



PRODUCT CATALOGUE



DIESEL SYSTEM PARTS

CNR
DIESEL SYSTEM PARTS



About Us



At **Cinbar Otomotiv**, we are committed to providing high-quality, precision-engineered solutions that meet the ever-evolving demands of the diesel fuel systems industry. With over 53 years of experience, we have established a strong reputation for reliability, innovation, and technical excellence.

Our extensive product range includes:

- Delphi, Cummins, Denso, Caterpillar, and Bosch valves,
- Bosch unit pump valves and components,
- Common rail washers, injector spacers and pins,
- Metric valves, advance pistons, gas shafts,
- Valve holders, bushings, throttle shafts,
- Overflow valves, screws, and a wide variety of complementary fitting and washer components.

Each product is designed and manufactured with meticulous attention to detail, in line with international standards and customer expectations.

We embrace a culture of continuous improvement, enhancing every department—from Production and Planning to Quality Assurance, Sales & Marketing, Accounting, and Procurement. Through consistent investment in advanced technology and the development of our human resources, we pursue a strict “zero defect” philosophy to maintain excellence at every stage of production.

At the core of our operations lies a deep commitment to customer satisfaction. By combining our in-depth industry knowledge with state-of-the-art production capabilities, we deliver solutions that not only meet but exceed expectations.

Since our foundation, we have stayed true to our values—trust, efficiency, and precision—while continually increasing our market presence both in Turkey and across international markets. As we grow, we take pride in contributing to the global recognition of Turkish manufacturing quality.

At **Cinbar Otomotiv**, we believe that success is no coincidence—it is the outcome of experience, innovation, dedication, and strategic investment. Guided by our vision and supported by strong after-sales service, we strive to be a long-term and dependable partner for all our stakeholders.

We sincerely thank all our customers and business partners for their trust and collaboration throughout this journey. Together, we look forward to shaping the future—with quality as our compass and excellence as our destination.

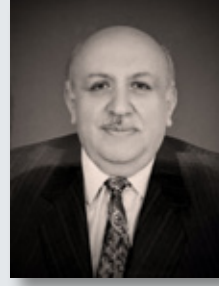
Süleyman CINBAROĞLU
Chairman of the Board / CEO

S. Cinbaroglu

Our Journey

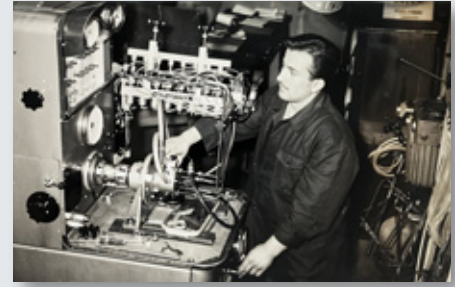
1955

Our founder, Salih Cınbaroğlu, began his professional journey as an engine repair technician, laying the foundation for what would become Cınbar Otomotiv.



1960 - 1970

During this period, he specialized in engine renewal processes, steadily building expertise and reputation in the field.



1970

After completing CAV Service Training, he established one of the first diesel pump and injector service workshops on the Anatolian side of Istanbul.



1972 - 1981

Alongside engine repairs, he continued to offer diesel pump repair services. By 1981, he fully transitioned from repair work to focus exclusively on the manufacturing of injector spare parts.



1986

The second generation, Süleyman Cınbaroğlu, began taking an active role in the company's growth. Having been involved in production since childhood, he contributed significantly to the company's development.

1990

Our operations expanded from a modest 50 m² workshop in Ümraniye to a 450 m² production facility, marking a significant milestone in our industrial growth.

2004

With our first CNC lathe machine investment, we modernized production and enhanced precision capabilities.

2008

We expanded our product line with the introduction of Delphi valve production.

2014

We further diversified our product range by initiating Denso valve production.

2024

- We made a historic investment, introducing PECM (Precision Electrochemical Machining) technology into Türkiye's manufacturing sector for the first time.
- Additionally, we began production of Cummins and Caterpillar valves, further strengthening our global product offering.

1996

We established our own chrome plating facility, enabling in-house chrome plating and refurbishment of injector pump elements.

2006

- We became the first company in the world to manufacture Bosch Unit Valves and Common Rail Valves.
- We also developed and launched the first lapping sets and assembly apparatus specifically designed for unit valves.

2012

We relocated to our current modern production facility in the DOSB İmes Industrial Zone, featuring a closed production area of 1,800 m².

2018

To meet increasing global demand, we invested in world-leading CNC lathe machines equipped with automatic 3-turret processing systems, enabling high-volume and mass production.



In Numbers



30+
Employees



72+
Export To Country



1800m²+
Production Area



2,000,000+
Production Capacity



300+
Customers



250+
Products



30+
New Product / Year



53+ years
Industry Experience

Sustainability

We work for a sustainable future at every stage of our activities. Sustainability is one of the core values of our company and has a priority at every stage of our business processes, products and strategies. With this understanding, we consider our environmental, social and economic responsibilities as a whole and progress in line with globally accepted standards.

Since our establishment, we have been taking strong steps to protect natural resources, reduce negative impacts on the environment and support projects that contribute to society. We adhere to the principle of sustainability in all our processes, from production to logistics, from the supply chain to employee training.



Quality Assurance

Continuous Improvement and Training

CNR Diesel ensures quality not only through inspections but also through continuous improvement processes. Each employee has adopted quality as a way of life and is responsible for contributing to continuous development. Our quality assurance unit analyzes all processes to achieve the determined goals and continuously suggests improvements.

Training Programs

Regular training is provided to all our employees to focus on quality at every stage from production to sales. These trainings increase quality awareness and contribute to processes being more efficient and error-free.

Performance Analyses

Performance analyses conducted for continuous development measure the effectiveness of each department and production line, creating opportunities to improve weak areas.

Supplier Quality Management

We ensure high quality not only with our own production processes but also with the companies in our supply chain. Cınbar Otomotiv only works with suppliers who have quality certificates, are reliable and comply with ethical rules. The quality systems of our suppliers must be compatible with our quality standards.

Supplier Evaluation and Monitoring

The performance of our suppliers is regularly monitored and evaluated. We do not work with suppliers that do not meet high quality and sustainability standards.

Common Quality Control Processes

By developing common quality control processes with suppliers, we ensure that our products are of high quality from the beginning to the end.

Customer satisfaction is the most important indicator of our quality assurance. The quality standards of our products aim to not only meet technical requirements, but also exceed the expectations of our customers. Every customer receives service from our company, confident in the performance, durability and reliability of our products.

Customer Feedback

We carefully evaluate customer feedback about our products and services. This feedback allows us to continuously improve quality.

After-Sales Support

With after-sales support, we guarantee customer satisfaction throughout the life of our products.



CONTENTS

07

Delphi Valves

11

Cummins Valves
Denso Valves
Caterpillar Valves

13

Bosch Valves

17

Bosch Unit Pump Valves &
Equipments

24

Spacers & Pins

27

Common Rail Washers
Other Washers
Piston & Bushing & Throttle Shafts

31

Overflow Valves
Screws Components

01

7135-754

08

9308-618C

02

7135-588

09

7135-754 (056)

03

7206-0379

10

7135-588 (052)

04

7206-0460

11

7135-486

05

7206-0936
7206-0979
7206-1006
7206-1010

12

150-024

06

7206-1013

13

150-026

07

9308- 622B

14

150-230



Delphi Valves





01

CNR Code
150-754

Original Code
7135-754

**Volvo 4 Pin
Control Valve Kit
(Two Spring)**

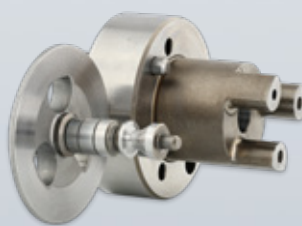


02

CNR Code
150-588

Original Code
7135-588

**Volvo 4 Pin
Control Valve Kit
(One Spring)**



03

CNR Code
150-0379

Original Code
7206-0379

Actuator Valve



04

CNR Code
150-0460

Original Code
7206-0460

Smart Injector Control Valve



05

CNR Code

150-0936

150-1006

150-0979

150-1010

Original Code

7206-0936

7206-1006

7206-0979

7206-1010

Euro 6 Control Valve



06

CNR Code

150-1013

Original Code

7206-1013

Euro 6 Control Valve



07

CNR Code

150-622B

Original Code

9308-622B

Trigger Valve Cr 28239295 ntd 28278897-P



08

CNR Code

150-618C

Original Code

9308-618C

Trigger Valve Cr 28239294 Ntd 28440421-P



09

CNR Code
150-056

Original Code
7135-754 (056)

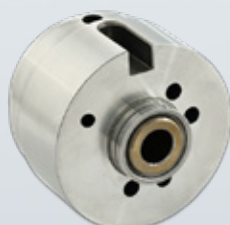
**Volvo 4 Pin Number 56
Control Bottom Valve
(Two Spring)**

10

CNR Code
150-052

Original Code
7135-588 (052)

**Volvo 4 Pin Number 52
Control Bottom Valve
(One Spring)**



11

CNR Code
150-486

Original Code
7135-486

Actuator Valve



12

CNR Code
150-024

Euro 6 Control Valve

13

CNR Code
150-026

Euro 6 Control Valve



14

CNR Code
150-230

Spacer for 486 Actuator

01

150-240

02

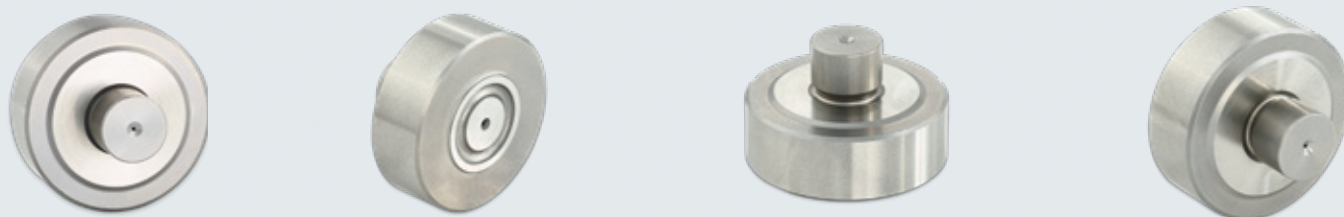
150-325 AC
150-325 AD
150-325 AE

03

150-0815

Cummins Valves
Denso Valves
Caterpillar Valves



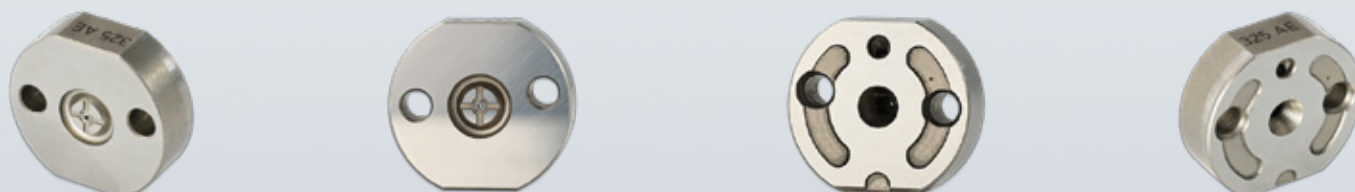


01

CNR Code
150-240

Scania Cr Xpi Euro 6 Control Valve

Denso Valves



02

CNR Code
150-325 AC : 546 AC Ford, Citroen, Peugeot Boxer
150-325 AD : 0 95000 547X Isuzu
150-325 AE : Toyota Hilux, Faraz

Control Valve

Caterpillar Valves



03

CNR Code
150-0815

Caterpillar Actuator Valve (C11-C12-C13-C15-C18)

01

O 445 110 351

08

R831

15

R297

02

O 445 110 418

09

T048

16

334

03

T518
T520
T528

10

T316

04

T613
T614

11

056

05

O 445 115 xxx
O 445 116 xxx
O 445 117 xxx

12

R158

06

150-T351

13

T010

07

150-T418

14

043



Bosch Valves





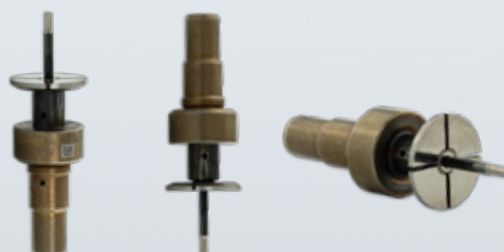
01 CNR Code 150-351 Original Code 0 445 110 351 **Injector Control Valve Kit**



02 CNR Code 150-418 Original Code 0 445 110 418 **Injector Control Valve Kit**



03 CNR Code 150-T518 Original Code T518 **Euro 6 Control Valve**
150-T520 / 150-T528 T520 / T528



04 CNR Code 150-T613 Original Code T613 **Euro 6 Control Valve**
150-T614 T614



05 CNR Code 150-115 / 150-116 / 150-117 Original Code 0 445 115 xxx / 0 445 116 xxx / 0 445 117 xxx **Cr Bosch Piezo Valve**



06 CNR Code 150-T351 **Injector Control Valve**



07 CNR Code 150-T418 **Injector Control Valve**



08 CNR Code 150-831 Original Code R831 **Trigger Valve Standard (with fiber and ball)**



09 CNR Code 150-048 Original Code T048 **Trigger Valve Standard (with fiber and ball)**



10 CNR Code 150-316 Original Code T316 **Trigger Valve Standard (with fiber and ball)**



11 CNR Code 150-T056 Original Code 056 **Trigger Valve Standard (with fiber and ball)**



12 CNR Code 150-158 Original Code R158 **Trigger Valve Standard (with fiber and ball)**



13 CNR Code 150-010 Original Code T010 **Trigger Valve Standard (with fiber and ball)**



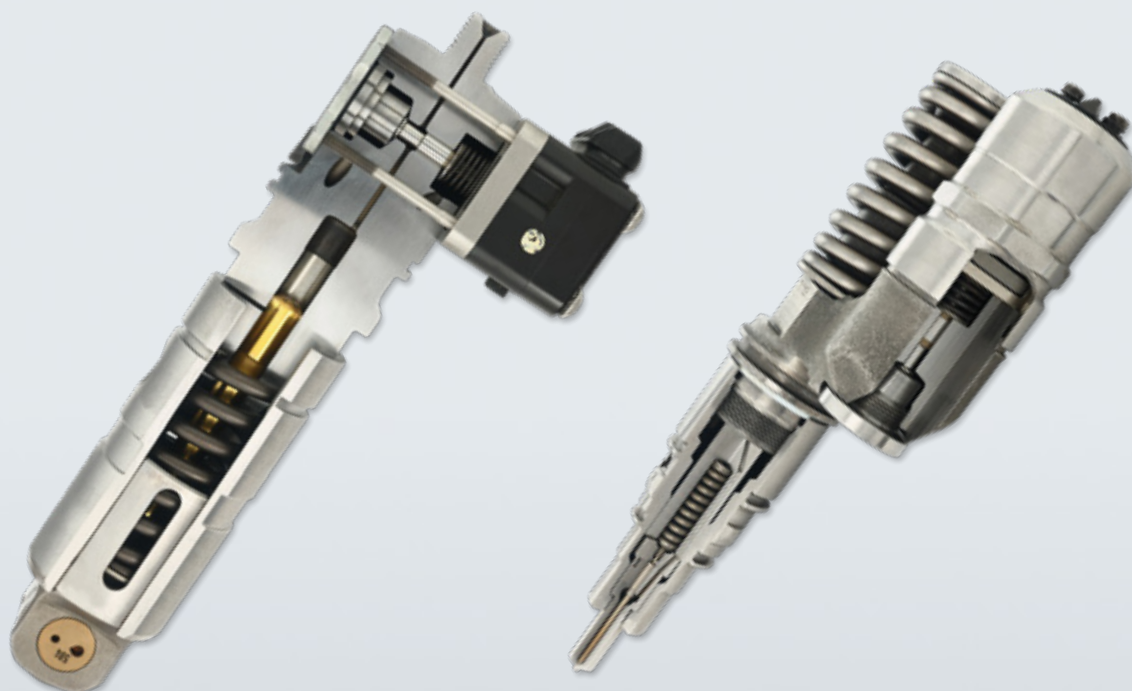
14 CNR Code 150-043 Original Code 043 **Trigger Valve Standard (with fiber and ball)**



15 CNR Code 150-297 Original Code R297 **Trigger Valve Standard (with fiber and ball)**



16 CNR Code 150-334 Original Code 334 **Trigger Valve Standard (with fiber and ball)**



Bosch Unit Pump Valves & Equipments

01

150-220

08

150-008

15

601-016

22

600-018

02

150-222

09

150-225

16

601-015D

23

601-019

03

150-224

10

150-235

17

601-016D

24

600-030

04

150-226

11

600-015

18

600-042

25

600-022

05

150-260

12

600-016

19

600-017

26

600-045

06

150-265

13

601-015

20

600-019

27

600-035S

07

150-005

14

150-340

21

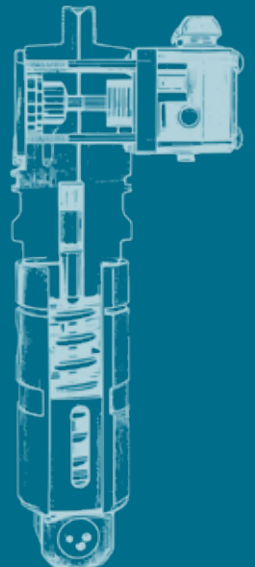
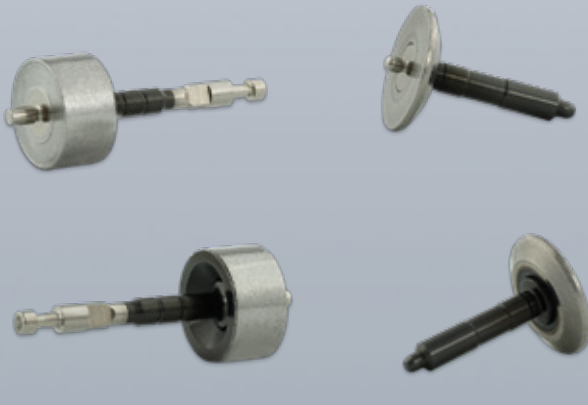
601-018

28

600-035L

29

600-035D



150-220 Trigger Table



01

CNR Code
150-220

Unit Pump Valve
6.995 mm-7.090 mm
Mercedes-Daf-Scania-Volvo-Iveco

Mercedes - Daf - Scania - Volvo - Iveco

Ø	+0.025	+0.050	+0.075	+0.100	+0.125	+0.150
6.995	✓	✓				
7.000	✓	✓	✓			
7.005	✓	✓	✓	✓	✓	✓
7.010	✓	✓	✓	✓	✓	✓
7.015	✓	✓	✓	✓	✓	✓
7.020	✓	✓	✓	✓	✓	✓
7.025	✓	✓	✓	✓	✓	✓
7.030		✓	✓	✓	✓	✓
7.035		✓	✓	✓	✓	✓
7.040		✓	✓	✓	✓	✓
7.045		✓	✓	✓	✓	✓
7.050		✓	✓	✓	✓	✓
7.055		✓				
7.060		✓				
7.070		✓				
7.075		✓				
7.080		✓				
7.085		✓				
7.090		✓				



02

CNR Code
150-222

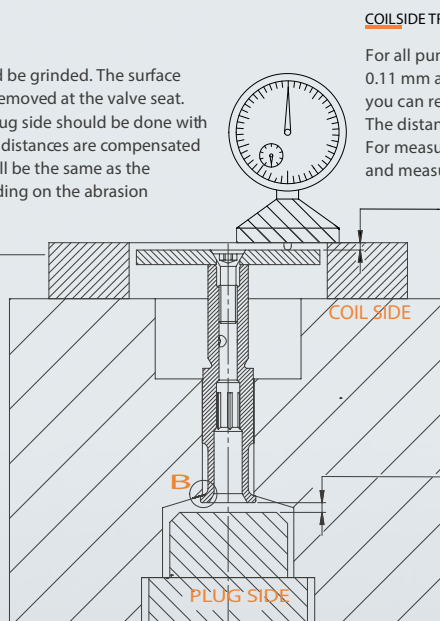
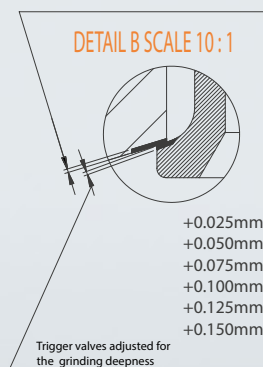
Unit Pump Valve
6.995 mm-7.040 mm
Scania for 3 holes pumps

150-222 Trigger Table

Ø	+0.025	+0.050	+0.075
6.995		✓	
7.000	✓	✓	✓
7.005	✓	✓	✓
7.010	✓	✓	✓
7.015	✓	✓	✓
7.020	✓	✓	✓
7.025	✓	✓	✓
7.030		✓	✓
7.035		✓	✓
7.040		✓	✓

Scania

The pump surface of the seat, which is seen on detail B should be grinded. The surface should be magnified 30 - 50 to be sure that all scratches are removed at the valve seat. For CNR valves grinding compensation for the coil side and plug side should be done with different valve thicknesses. The coil side and plug side trigger distances are compensated according the grinding deepnesses. The fuel consumption will be the same as the original valve. The grinding operation should be done depending on the abrasion deepness of the valve seat.



COILSIDE TRIGGER DISTANCE

For all pumps coil side trigger distance is between 0.11 mm and 0.12 mm. If necessary in order to increase the fuel amount you can reduce it down to 0.09 mm. The distance tolerance for repairment is between 0.09 mm and 0.12 mm. For measuring coil side first take the plug out and press with your finger and measure the distance. Plate and valve surface should be , very clean.

PLUG SIDE TRIGGER DISTANCE

For Mercedes group plug side original distance tolerance is 0.12 mm. Tolerance for repairment is between 0.11 - 0.13mm

For Scania, Volvo, DAF, and Iveco group applications, when fully torqued using a 10 mm Allen key, the clearance should measure between 0.12 mm and 0.13 mm. The original setting tolerance range is specified as 0.12 mm to 0.14 mm.

Valve diameters are between 6.995 mm and 7.090 mm. The diameter steps are 0.005 mm each. In order to place the valve in the boring of the pump body, try to place the next bigger diameter and grind until it fits correctly. You can use the valve like a boregauge and be sure that next step diameter should not pass through the boring. The gap between the original valve and the boring diameter is 0.003 mm.

150-224 Trigger Table



	Ø	+0.025	+0.050
Renault Magnum - Mack Motors	7.000	✓	✓
	7.005	✓	✓
	7.010	✓	✓
	7.015	✓	✓
	7.020	✓	✓
	7.025	✓	✓
	7.030		✓
	7.035		✓
	7.040		✓

03

CNR Code
150-224

Unit Pump Valve
7.000 mm -7.040 mm
Renault Magnum - Mack Motors

150-226 Trigger Table



	Ø	+0.025	+0.050
Detroit Motors	6.980	✓	✓
	6.985	✓	✓
	6.990	✓	✓
	6.995	✓	✓
	7.000	✓	✓
	7.005	✓	✓
	7.010	✓	✓
	7.015	✓	✓
	7.020	✓	✓
	7.025	✓	✓

04

CNR Code
150-226

Detroit Diesel Valve
6.980 mm-7.025 mm



05

CNR Code
150-260

Euro6 Control Valve



06

CNR Code
150-265

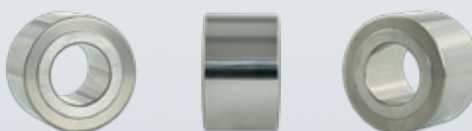
Euro6 Control Valve



07

CNR Code
150-005

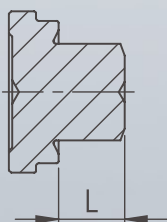
Unit Pump Camshaft Pulley



08

CNR Code
150-008

Unit Pump Camshaft Pulley

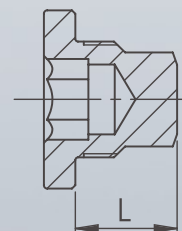


9.50mm
9.52mm
9.54mm
9.56mm
9.58mm
9.60mm
9.62mm
9.64mm
9.66mm

09

CNR Code
150-225

Adjusment Plug

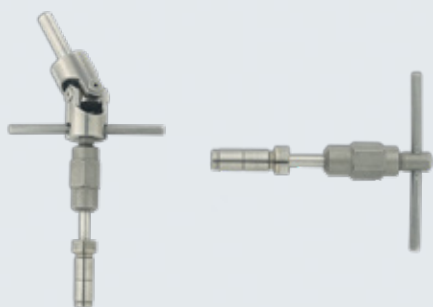


14.70mm
14.72mm
14.74mm
14.76mm
14.78mm
14.80mm
14.82mm
14.84mm
14.86mm

10

CNR Code
150-235

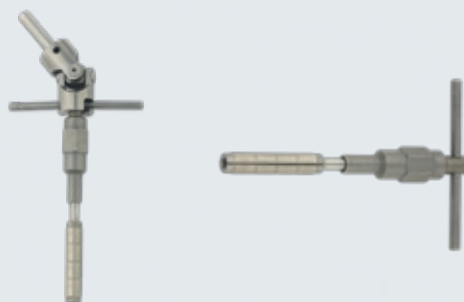
Adjusment Plug



11

CNR Code
600-015

Unit Pump Seat Grinding Tool



12

CNR Code
600-016

Unit Pump Grinding Tool

- Green : Finish
- Yellow : Middle Finish
- Red : Coarse Grains
- Orange : Extra Coarse Grains



13

CNR Code
601-015

**Unit Pump cbn Bushing for Seat
Green-Yellow-Red-Orange**



14

CNR Code
150-340

**Unit Pump Fuel Plate
3.83-3.98mm-0.01mm size**



15

CNR Code
601-016

**Unit Pump
Hole Lapping**

- Green : Finish
- Red : Coarse Grains



16

CNR Code
601-015D

**Detroit Diesel
Seat Grinding**



17

CNR Code
601-016D

**Detroit Diesel
Hole Lapping**



18

CNR Code
600-042

Joint for Grinding Tools



19

CNR Code
600-017

Mitutoyo

Water Resistance Micrometer



20

CNR Code
600-019

Unit Pump Plug Side Trigger
Dist. Measuring Gauge



21

CNR Code
601-018

Unit Pump Coil Side
Measuring Gauge



22

CNR Code
600-018

Magnetic Gauge Stand



23

CNR Code
601-019

Cbn Diamond Steel Plate
Plate Diameter:10x20 cm
Size: 600-800-1000-1200



24

CNR Code
600-030

Microscope
10x Zoom * 4 = 40x magnification



25

CNR Code
600-022

Micrometer Stand



26

CNR Code
600-045

**Electrical Seat Grinding
Machine with joint 450 / 1650 rpm**



27

CNR Code
600-035S

600-035S Set-3 Pieces

Seat Lapping T-bar x2
Seat Lapping T-bar head plastic x1
Lapping components (Course x1
and Finish x1)
Hole Grinding with bar x1
Cleaning brush x2
Fixing bar x1

Unit Pump Grinding Tool Set



28

CNR Code
600-035L

600-035L Set-4 Pieces

Seat Lapping T-bar x3
Seat Lapping T-bar head plastic x1
Lapping components (Course x1,
Middle x1, Finish x1)
Hole Grinding with bar x1
Cleaning brush x2
Fixing bar x1

Unit Pump Grinding Tool Set



29

CNR Code
600-035D

600-035D Detroit Set-3 Pieces

Seat Lapping T-bar x2
Seat Lapping T-bar head plastic x1
Lapping components (Course x1,
Finish x1)
Hole Grinding with bar x1
Cleaning brush x2
Fixing bar x1

**Unit Pump Grinding Tool Set
for Detroit Diesel**

Spacers & Pins

01

F 00Z Z20 003

08

7169-453

15

2 433 124 379

02

2 430 134 023

09

2 430 136 202

16

2 433 124 388

03

2 430 136 085

10

2 430 136 212

17

2 433 124 446

04

2 430 136 166

11

F 00Z B20 001 180-487

05

7135-487

12

2 433 120 127

06

F 018 B06 804

13

2 433 120 128

07

7169-408

14

2 433 124 376





01 CNR Code 160-003 Original Code F 00Z Z20 003 **Injector Spacer**



02 CNR Code 160-023 Original Code 2 430 134 023 **Injector Spacer**



03 CNR Code 160-085 Original Code 2 430 136 085 **Injector Spacer**



04 CNR Code 160-166 Original Code 2 430 136 166 **Injector Spacer**



05 CNR Code 160 487 Original Code 7135-487 **Injector Spacer**



06 CNR Code 160-804 Original Code F 018 B06 804 **Injector Spacer**



07 CNR Code 160-408 Original Code 7169-408 **Injector Spacer**



08 CNR Code 160-453 Original Code 7169-453 **Injector Spacer**



09 CNR Code 160-202 Original Code 2 430 136 202 **Injector Spacer**



10 CNR Code 160-212 Original Code 2 430 136 212 **Injector Spacer**



11 CNR Code 180-001 Original Code F 00Z B20 001 **Injector Pressure Pin (M.b Daf Renault Kdh)**



12 CNR Code 180-127 Original Code 2 433 120 127 **Injector Pressure Pin (900 Scania Volvo Yavuz)**



13 CNR Code 180-128 Original Code 2 433 120 128 **Injector Pressure Pin (Volvo-BMC-Fatih)**



14 CNR Code 180-376 Original Code 2 433 124 376 **Injector Pressure Pin (Man M.b Scania Volvo)**



15 CNR Code 180-379 Original Code 2 433 124 379 **Injector Pressure Pin**



16 CNR Code 180-388 Original Code 2 433 124 388 **Injector Pressure Pin**



17 CNR Code 180-446 Original Code 2 433 124 446 **Injector Pressure Pin**



18 CNR Code 180-487 **Injector Pressure Pin**

01

262-105

08

262-125

15

125-001

22

1 460 324 332

02

262-110

09

262-120

16

7123-15C

23

1 460 324 333

03

262-115

10

262-140

17

7177-419C

04

262-130

11

262-150

18

7177-828T

05

262-145

12

2 430 100 xxx

19

1 463 162 111

06

262-155

13

2 430 101 xxx

20

1 463 162 264

07

262-135

14

2 430 103 xxx

21

1 463 161 596



Common Rail Washers &
Other Washers
Piston & Bushing & Throttle Shafts



01

CNR Code
262-105

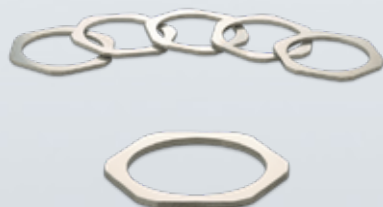
Ø 15.80 x 10.40 mm
Common Rail Distance Washer
1.20 mm- 1.29 mm 0.01 mm sizes



02

CNR Code
262-110

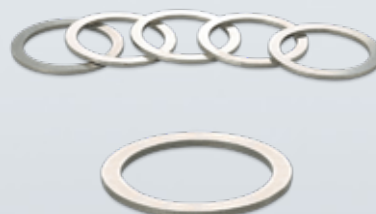
Ø 22.80 x 19.55 mm
Common Rail Distance Washer
1.53 mm-1.62 mm 0.005 mm sizes



03

CNR Code
262-115

Ø 23.80 x 18.05 mm
Common Rail Hexagon Washer
0.93 mm-1.05 mm 0.01 mm sizes



04

CNR Code
262-130

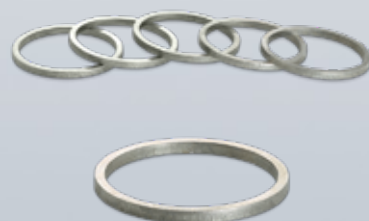
Ø 23.65 x 19.05 mm
Common Rail Distance Washer
0.95 mm-1.12 mm 0.01 mm sizes



05

CNR Code
262-145

Ø 23,80 x 19,00 mm
Common Rail Distance Washer
1.25 mm-1.35 mm 0.01 mm sizes



06

CNR Code
262-155

Ø 24.25 x 21.50 mm
Common Rail Distance Shim
1.57 mm-1.65 mm 0.005 mm sizes



07

CNR Code
262-135

Ø 5.50 mm
Common Rail Distance Washer
8.30 mm 8.60 mm 0.03 mm sizes



08

CNR Code
262-125

Ø 2.30 mm
Common Rail Distance Washer
1.01 mm-1.37 mm 0.03 mm sizes



09

CNR Code
262-120

Ø 5.40 x 3.40 mm
Common Rail Distance Washer
1.05 mm-1.70 mm 0.05 mm sizes



10

CNR Code
262-140

Ø 4.20 x 2.30 mm
Common Rail Distance Washer
1.05 mm-1.95 mm 0.05 mm sizes



11

CNR Code
262-150

Ø 4.00 x 1.75 mm
Common Rail Distance Washer
1.00 mm-1.20 mm 0,02 mm sizes



Other Washers



12

CNR Code Original Code
261-100 2 430 100 xxx

Ø 9.75 mm
Injector Distance Washers
(1.00 mm-2.00mm
0.05 mm sizes)



13

CNR Code Original Code
261-101 2 430 101 xxx

Ø 8.50 mm
**Scania, Volvo Injector
Distance Washers**
(1.00 mm-2.00mm
0.05 mm sizes)



14

CNR Code Original Code
261-103 2 430 103 xxx

Ø 7.15 mm
**Japan Group Injector
Distance Washers**
(1.00 mm-2.00mm
0.05 mm sizes)





15

CNR Code
125-001

Bosch VE Pressure Piston
Standard 0.005-0.010 mm



16

CNR Code Original Code
125-15G 7123-15G

Pressure Piston
Standard 0.005-0.010 mm



17

CNR Code Original Code
125-419C 7177-419C

Advance Piston



18

CNR Code Original Code
140-828T 7177-828T

Throttle Laver



19

CNR Code Original Code
140-111 1 463 162 111

Throttle Shaft



20

CNR Code Original Code
140-264 1 463 162 264

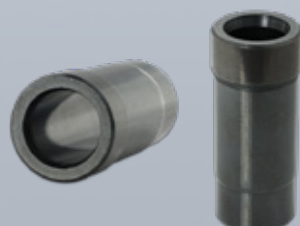
Throttle Shaft



21

CNR Code Original Code
140-596 1 463 161 596

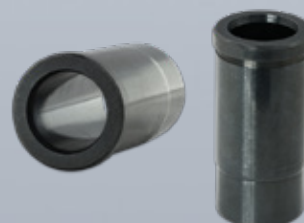
Throttle Shaft



22

CNR Code Original Code
220-332 1 460 324 332

Throttle Shaft Bushing
Standard 0.04-0.07 mm



23

CNR Code Original Code
220-333 1 460 324 333

Throttle Shaft Bushing
Standard 0.04-0.07 mm

01

090131-1091

08

7180-357K

15

513250

02

2 433 456 034

09

7180-358

16

515354

03

2 433 456 035

10

2 463 452 001

17

600-110

04

1 417 413 047

11

1 463 461 306

18

7135-76D

05

7008-332

12

600-013

06

7123-351B

13

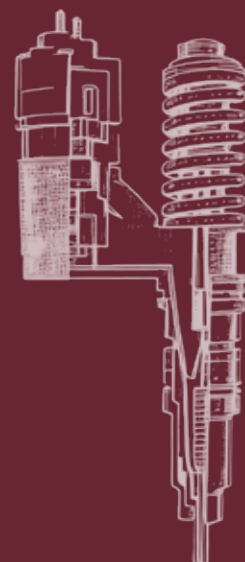
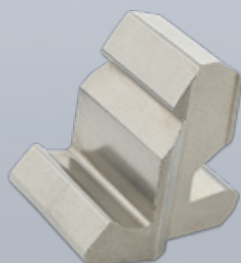
7123-914E

07

7123-352B

14

7123-914G



Overflow Valves & Screws Components



01

CNR Code 200-1091
Original Code 090131-1091

Valve Holder



02

CNR Code 240-034
Original Code 2 433 456 034

**Bosch Pump
Diesel Fuel
Overflow Valve
Metric 6x1**



03

CNR Code 240-035
Original Code 2 433 456 035

**Mercedes Cargo
Diesel Fuel
Overflow Valve
Metric 8x1**



04

CNR Code 240-047
Original Code 1 417 413 047

**Mercedes
Overflow Valve**



05

Vent For Screw
CNR Code 240-332
Original Code 7008-332



06

Vent For Screw
CNR Code 240-351B
Original Code 7123-351B



07

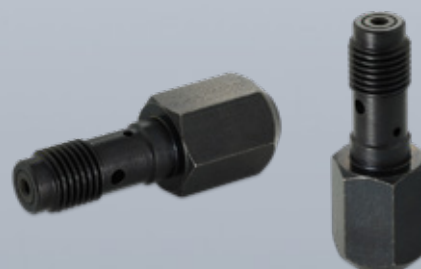
Vent For Screw
CNR Code 240-352B
Original Code 7123-352B



08

CNR Code 240-357K
Original Code 7180-357K

**Pressure
Overflow Valve**



09

CNR Code 240-358
Original Code 7180-358

**Pressure
Overflow Valve**



10

CNR Code
600-001

Original Code
2 463 452 001

**Plug for Rotor
(Ford Transit)
(with screw, oring)**

11

CNR Code
600-306

Original Code
1 463 461 306

**Plug for Rotor
(with screw,
washer, oring)**



● Green : 3 micron

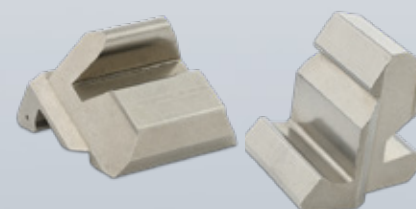


● Yellow : 6 micron

12

CNR Code
600-013

Diamond Paste



13

Regulating Weight
CNR Code
300-914E

Original Code
7123-914E

14

Regulating Weight
CNR Code
300-914G

Original Code
7123-914G

15

Ford Cargo Regulating Weight
CNR Code
300-250

Original Code
513250



16

CNR Code
600-354

Ramp Roller
Original Code
515354

17

CNR Code
600-110

Injector Hole Drill
0.11 mm-0.12 mm

18

CNR Code
600-76D

Original Code
7135-76D

**Spacer
Set**

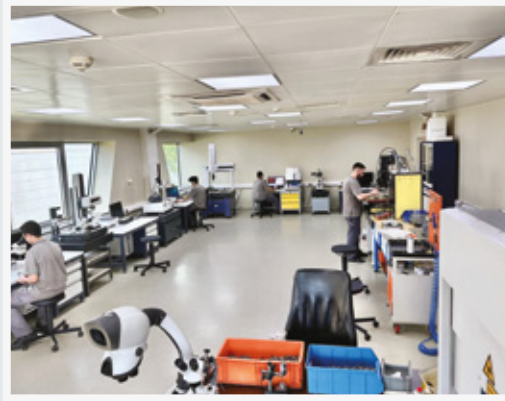
ORIGINAL VALVE CODE	CNR VALVE CODE	ORIGINAL VALVE SET CODE	INJECTOR NUMBER	INJECTOR NUMBER	INJECTOR NUMBER
R297	150-297	F 00R J00 339	0 445 120 018	0 445 120 103	0 445 120 032
R1287 R297	150-297	F 00R J00 399	0 445 120 009	0 445 120 015	0 445 120 084
			0 445 120 010	0 445 120 019	0 445 120 085
			0 445 120 014	0 445 120 020	
R297	150-297	F 00R J02 067 F 00R J01 895	0 445 120 012	0 445 120 017	0 445 120 077
			0 445 120 013	0 445 120 043	0 445 120 089
			0 445 120 016		
R297	150-297	F 00R J02 213	0 445 120 040	0 445 120 041	
R297	150-297	F 00R J00 420	0 445 120 011		
R288	150-297	F 00R J02 130	0 445 120 007	0 445 120 151	0 445 120 239
			0 445 120 018	0 445 120 152	0 445 120 250
			0 445 120 032	0 445 120 208	0 445 120 251
			0 445 120 059	0 445 120 209	0 445 120 252
			0 445 120 060	0 445 120 210	0 445 120 254
			0 445 120 079	0 445 120 211	0 445 120 255
			0 445 120 103	0 445 120 212	0 445 120 256
			0 445 120 123	0 445 120 231	0 445 120 273
R1157 R158	150-158	F 00R J01 159	0 445 120 132	0 445 120 238	
			0 445 120 024	0 445 120 045	0 445 120 068
			0 445 120 026	0 445 120 053	0 445 120 105
			0 445 120 027	0 445 120 055	0 445 120 154
R1157 R158	150-158	F 00R J01 218 F 00R J02 466	0 445 120 044	0 445 120 056	
			0 445 120 030	0 445 120 100	0 445 120 218
R1157 R158	150-158	F 00R J01 278	0 445 120 061	0 445 120 217	0 445 120 219
			0 445 120 054	0 445 120 075	0 445 120 057
P1940 831	150-831	F 00R J01 941	0 445 120 346		
			0 445 120 029	0 445 120 121	0 445 120 236
			0 445 120 037	0 445 120 122	0 445 120 237
			0 445 120 070	0 445 120 125	0 445 120 240
			0 445 120 097	0 445 120 133	0 445 120 241
			0 445 120 112	0 445 120 140	0 445 120 243
R831	150-831	F 00R J01 222	0 445 120 115	0 445 120 144	0 445 120 253
			0 445 120 120	0 445 120 159	0 445 120 272
			0 445 120 033	0 445 120 096	0 445 120 175
			0 445 120 034	0 445 120 108	0 445 120 176
R1938 R831	150-831	F 00R J01 451	0 445 120 051	0 445 120 173	
			0 445 120 052	0 445 120 174	
R1157 R158	150-158	F 00R J02 454	0 445 120 025		
			0 445 120 064	0 445 120 137	0 445 120 246
			0 445 120 065	0 445 120 138	0 445 120 362
			0 445 120 074	0 445 120 139	0 445 120 363
R1157 R158	150-158	F 00R J01 704	0 445 120 136	0 445 120 234	
R158	150-158	F 00R J01 479	0 445 120 110	0 445 120 245	0 445 120 141
R158	150-158	F 00R J01 683	0 445 120 066	0 445 120 067	
R158	150-158	F 00R J01 683	0 445 120 080	0 445 120 268	

ORIGINAL VALVE CODE	CNR VALVE CODE	ORIGINAL VALVE SET CODE	INJECTOR NUMBER	INJECTOR NUMBER	INJECTOR NUMBER
R158	150-158	F 00R J02 103	0 445 120 134	0 445 120 297	
R158	150-158	F 00R J02 235	0 445 120 101	0 445 120 314	
T008	150-056	F 00V C01 001	0 445 110 003	0 445 110 014	0 445 110 069
			0 445 110 004	0 445 110 015	0 445 110 070
			0 445 110 005	0 445 110 024	0 445 110 071
			0 445 110 006	0 445 110 025	0 445 110 072
			0 445 110 009	0 445 110 034	0 445 110 073
			0 445 110 010	0 445 110 035	0 445 110 074
			0 445 110 011	0 445 110 045	0 445 110 093
			0 445 110 012	0 445 110 046	0 445 110 094
T010	150-010	F 00V C01 003	0 445 110 008	0 445 110 020	0 445 110 044
			0 445 110 062		
T010	150-010	F 00V C01 005	0 445 110 021	0 445 110 056	0 445 110 146
			0 445 110 022	0 445 110 086	
T010	150-010	F 00V C01 013	0 445 110 057		
T010	150-010	F 00V C01 015	0 445 110 059		
V043	150-043	F 00V C01 022	0 445 110 084	0 445 110 102	0 445 110 184
			0 445 110 087	0 445 110 141	
V043	150-043	F 00V C01 033	0 445 110 091	0 445 110 186	0 445 110 306
			0 445 110 092	0 445 110 279	
			0 445 110 185	0 445 110 283	
V043	150-043	F 00V C01 034	0 445 110 109	0 445 110 144	0 445 110 178
			0 445 110 110	0 445 110 145	
			0 445 110 127	0 445 110 160	
V043	150-043	F 00V C01 043	0 445 110 047	0 445 110 049	0 445 110 266
			0 445 110 048	0 445 110 130	
V043	150-043	F 00V C01 044	0 445 110 064	0 445 110 126	0 445 110 290
			0 445 110 101		
V043	150-043	F 00V C01 050	0 445 110 173	0 445 110 221	
T048	150-048	F 00V C01 038	0 445 110 083		
T056	150-056	F 00V C01 045	0 445 110 095	0 445 110 105	0 445 110 151
			0 445 110 096	0 445 110 106	0 445 110 152
			0 445 110 099	0 445 110 107	0 445 110 170
			0 445 110 100	0 445 110 108	0 445 110 171
			0 445 110 103	0 445 110 120	
			0 445 110 104	0 445 110 121	
T056	150-056	F 00V C01 051	0 445 110 181	0 445 110 200	0 445 110 207
			0 445 110 182	0 445 110 201	0 445 110 208
			0 445 110 189	0 445 110 202	0 445 110 224
			0 445 110 190	0 445 110 205	0 445 110 225
			0 445 110 199	0 445 110 206	
T334	150-334	F 00V C01 334	0 445 110 183	0 445 110 310	0 445 110 331
			0 445 110 260	0 445 110 316	
			0 445 110 309	0 445 110 322	
T334	150-334	F 00V C01 336	0 445 110 213	0 445 110 287	0 445 110 391
			0 445 110 243		

ORIGINAL VALVE CODE	CNR VALVE CODE	ORIGINAL VALVE SET CODE	INJECTOR NUMBER	INJECTOR NUMBER	INJECTOR NUMBER
T334	150-334	F 00V C01 346	0 445 110 253	0 445 110 258	0 445 110 329
			0 445 110 254	0 445 110 269	0 445 110 330
			0 445 110 257	0 445 110 270	
334	150-334	F 00V C01 347	0 445 110 255	0 445 110 319	0 445 110 320
			0 445 110 256		
332	150-334	F 00V C01 331	0 445 110 209	0 445 110 216	0 445 110 301
			0 445 110 212	0 445 110 219	0 445 110 400
332	150-334	F 00V C01 352	0 445 110 274	0 445 110 278	0 445 110 308
			0 445 110 275	0 445 110 299	0 445 110 327
			0 445 110 277	0 445 110 300	
334	150-334	F 00V C01 353	0 445 110 265		
C339	150-334	F 00V C01 338	0 445 110 247	0 445 110 273	0 445 110 248
T334	150-334	F 00V C01 359	0 445 110 293	0 445 110 365	0 445 110 515
			0 445 110 305	0 445 110 379	0 445 110 521
			0 445 110 313	0 445 110 380	0 445 110 541
			0 445 110 343	0 445 110 397	0 445 110 628
			0 445 110 344	0 445 110 412	0 445 110 629
			0 445 110 345	0 445 110 445	0 445 110 630
			0 445 110 346	0 445 110 446	0 445 110 631
			0 445 110 347	0 445 110 448	0 445 110 632
			0 445 110 355	0 445 110 449	0 445 110 669
			0 445 110 357	0 445 110 454	0 445 110 670
			0 445 110 364	0 445 110 512	0 445 110 710
316	150-316	F 00V C01 328	0 445 110 137	0 445 110 176	0 445 110 234
			0 445 110 138	0 445 110 177	0 445 110 235
			0 445 110 139	0 445 110 179	0 445 110 263
			0 445 110 140	0 445 110 180	0 445 110 264
			0 445 110 155	0 445 110 191	
			0 445 110 156	0 445 110 192	
T316	150-316	F 00V C01 315	0 445 110 136	0 445 110 239	0 445 110 282
			0 445 110 188	0 445 110 259	0 445 110 285
			0 445 110 220	0 445 110 271	
T316	150-316	F 00V C01 324	0 445 110 162	0 445 110 193	0 445 110 294
			0 445 110 163	0 445 110 194	0 445 110 295













cnrdiesel 

For our Injector Repair and Assembly Technical Trainings,
you can visit our YouTube channel.





CINBAR OTOMOTİV SANAYİ TAAH. ve TİC. LTD. ŞTİ.

D.O.S.B. İmes San. Sit. E Blok 501 Sk. No:31
Y. Dudullu 34776 Ümraniye - İstanbul / TÜRKİYE
T: +90 216 415 40 40 / +90 216 335 18 04
F: +90 216 415 40 90

info@cnrdiesel.com
www.cnrdiesel.com